

14

DEPOSITION
EXHIBIT
#6
11-4-87
NATIONAL COURT REPORTING

from the desk of D. N. RENNEKER

February 12, 1981

To: D. E. Dawkins
R. C. Lunn
J. E. MacAfee

Attached are rough drafts of charts for Friday's meeting.

D. N. Renneker

1j1
CONFIDENTIAL
DISCLOSED BY ORDER OF THE COURT

American Motors Corporation

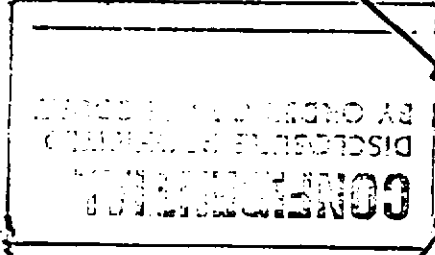
CUSTOMER REQUIREMENTS

DIRECTIONAL STABILITY

- INCREASE WHEELBASE (CJT)
- LOWER C.G.
- IMPROVED SWAY BARS
- VARIABLE RATIO POWER STEERING
- IMPROVED BALL JOINTS
- RETUNE SPRINGS & SHOCKS
- MINIMIZE SCRUB RADIUS

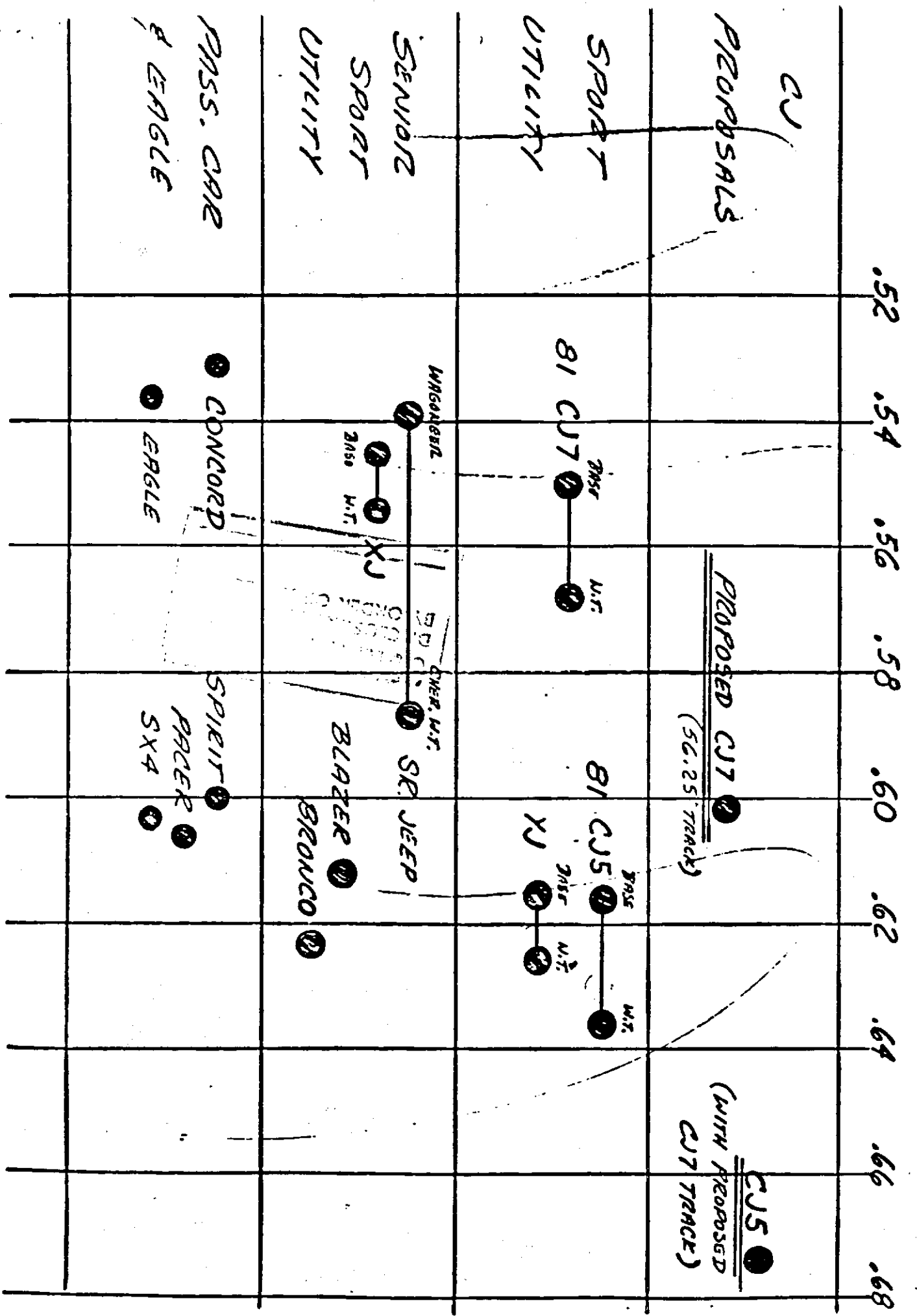
ROLLOVER

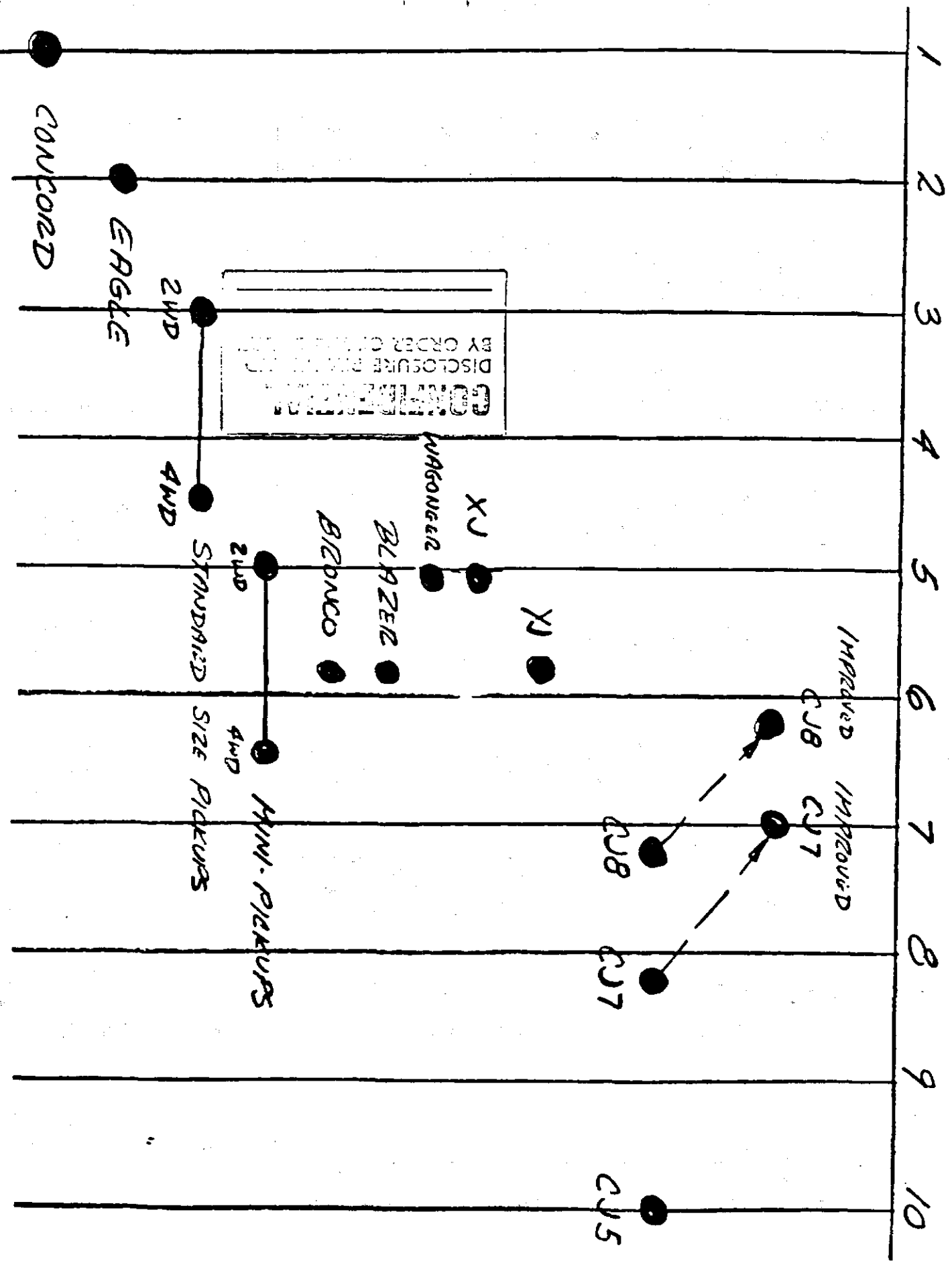
- INCREASE TRACK
- LOWER C.G.
- IMPROVED SWAY BARS



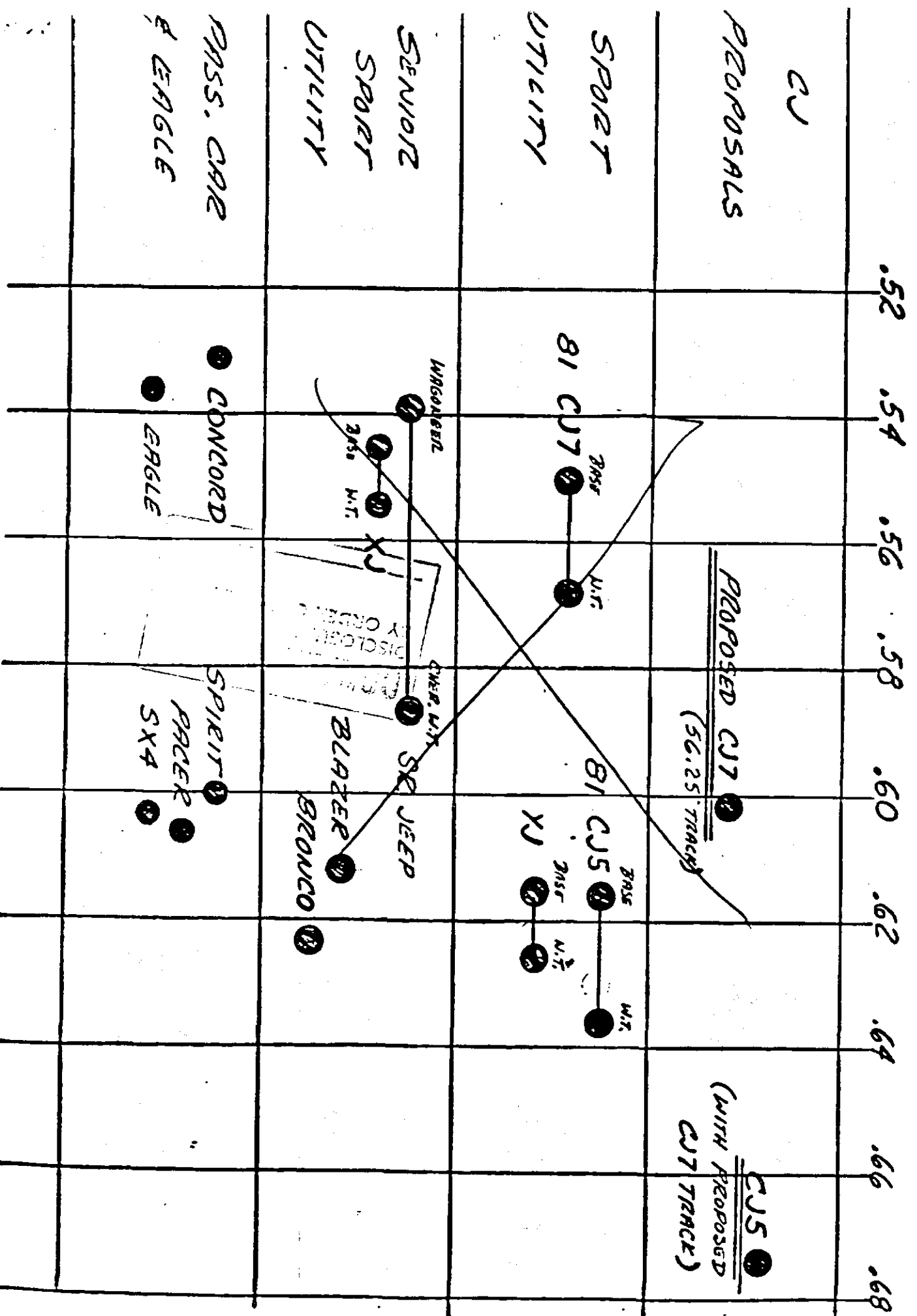
1982 PRODUCT CHANGES

RELATIVE TRACK WIDTH (TRACK/W.B.)

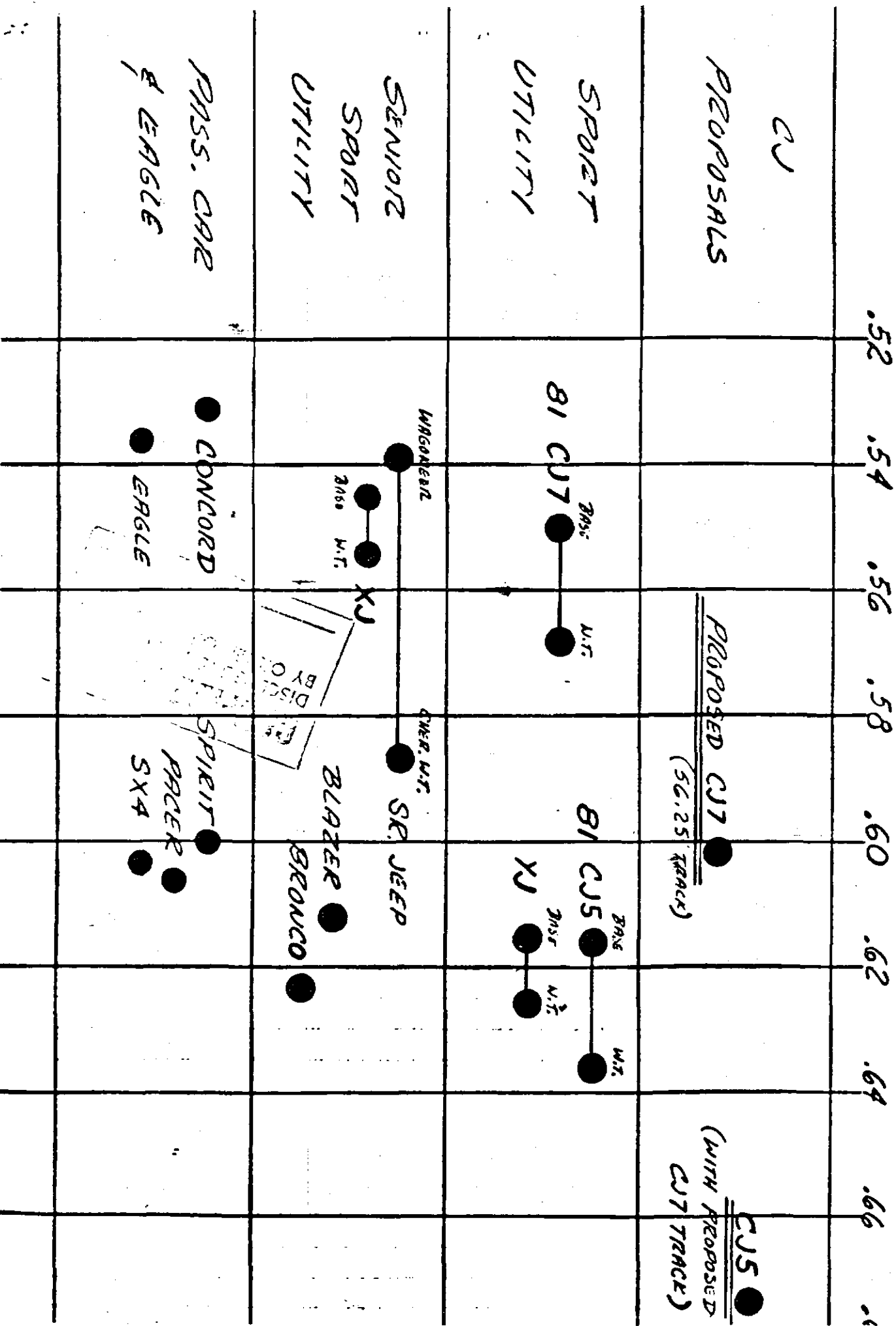




RELATIVE TRACK WIDTH (TRACK/W.B.)



RELATIVE TRACK WIDTH (TRACK/W.B.)



REACTIVE FOLLOWOVER TENDENCY

(REF. TO CG HEAVY TRACK X TUB.)

